

Peninsula Hills

BY ALPHABAIT



Site Layout





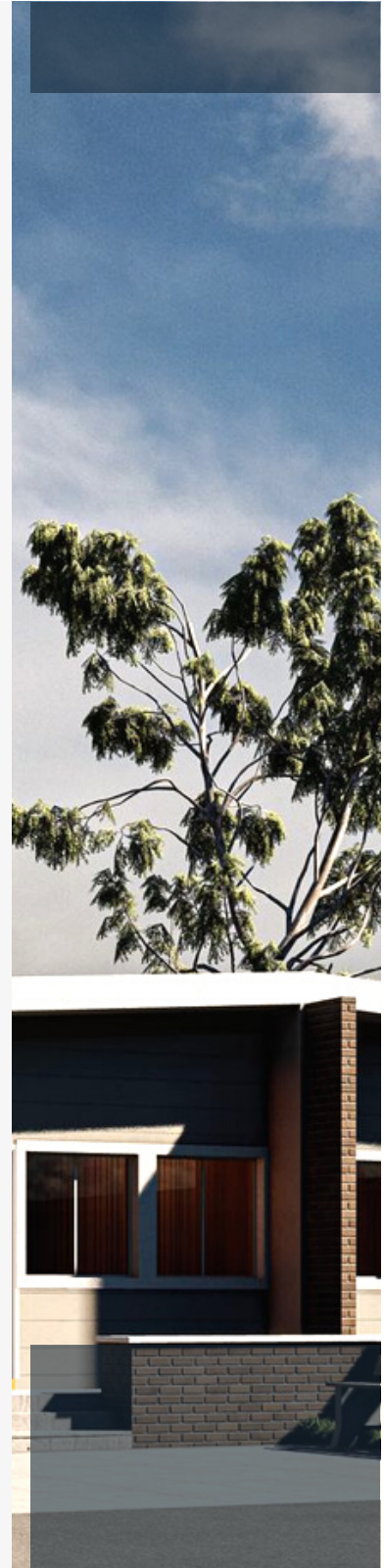
About the Project

Peninsula Hills stands as a remarkable mass housing project, envisioned to provide 1,700 affordable housing units, comprising both semi-detached and fully detached bungalows. Nestled in the charming locale of Masaka-Karu, a mere 17.4 kilometers away from the AYA roundabout, this city is designed to embody the perfect blend of social, commercial, and institutional amenities.

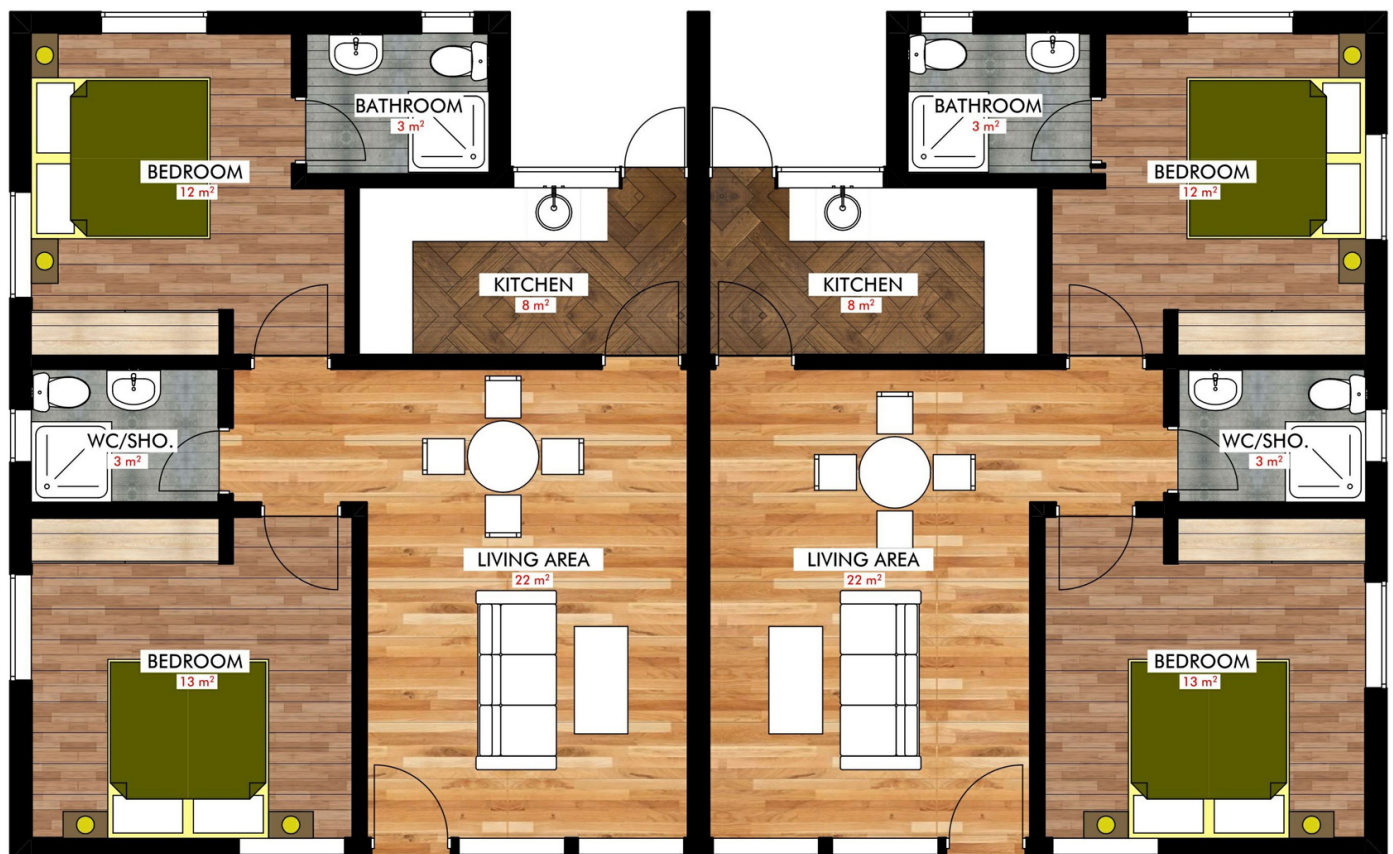
Our vision for Peninsula Hills is to create a vibrant community that exemplifies the epitome of contemporary living. Offering a wide array of facilities and services, it emerges as a truly affordable destination for individuals seeking a delightful balance between work, residence, and leisure.

With meticulous planning and thoughtful architecture, Peninsula Hills promises a unique living experience for its residents. Embracing the values of community life, our property provides an environment that fosters harmony, belonging, and a strong sense of togetherness.

At Peninsula Hills, we prioritize the ease and comfort of our residents. Whether you're a family looking for a peaceful home or an entrepreneur seeking a prime location for your business, Peninsula Hills caters to all aspirations.



2 Bedroom Semi-Detached



3 Bedroom Fully Detached



Utilities and Services



Access Roads



School



Playground



Mosque



Church



Hotel



Bank



Green Areas



Sport Complex



Gas Station



Farmers Market



Fire Service Station



Police Station



Hospital



Abbbatoir



Mall



Payment Plan Options

*Outright
Payment*

*12 Month
Plan*

*NHF/Rent to own
scheme*
